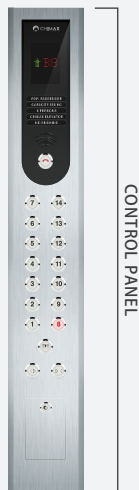






HOSPITAL ELEVATOR



CONTROL PANEL

HOSPITAL ELEVATOR

SPECS

- Cabin ceiling : Steel paint metal, Additional energy-saving LED embedded lights and muted cross-flow air ventilation system.
- Cabin wall : Hairline stainless steel
- Cabin door : Hairline stainless steel
- Cabin door jamb : Hairline stainless steel
- Kick plate : Hairline stainless steel
- Sill : Hardened Aluminum
- Cabin floor : PVC floor tiles



TYPE:CP-3



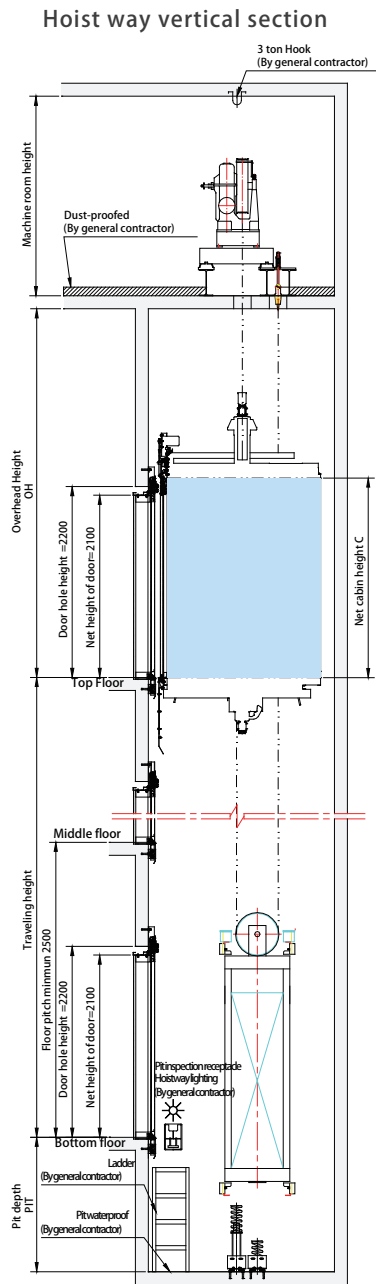
CONTROL PANEL

The hospital elevator design begins with people and meets the special needs of all potential users, thus creating a comfortable harmonious spacious elevator. The medical elevator design can be tailored to different standards upon request, facilitating medical use, including reduced mobility control panels, cabin handrails, crash guards, infrared safety sensor devices, etc. The installation is to provide users with an extra layer of security. The performance of stability and quietness is self-evident.

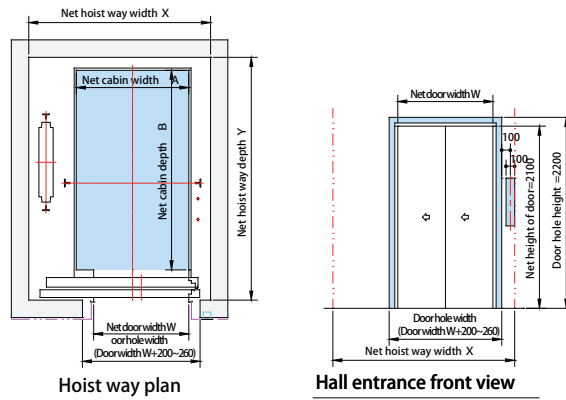
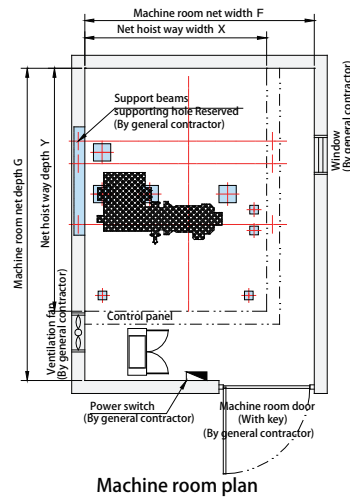
Chimax believes safety features on hospital elevators should be regarded as basic equipment and patients should be transferred in a comfortable and security space. You will feel how people are held in the highest respect. The elevator operation panel design inside and outside the elevator includes braille lettering for the visually impaired. The height is set for wheelchair accessible equipment regulatory compliance. The cabin interior handrails provide additional support for patients. The crash guard effectively protects the cabin from collisions. The thoughtful design ensures suitable use by all potential passengers.



HOSPITAL ELEVATOR



Hoist way plan layout



HOSPITAL ELEVATOR SPECIFICATION TABLE

TYPE	Capacity	Door Opening Type	Cabin Internal		Hall Door	Hoistway		Machine Room	
			A	B	W	X	Y	F	G
EB-750	11 persons 750 kg	2S	1300	2300	1100	2100	2800	2600	4600
EB-1000	15 persons 1000 kg	2S	1500	2500	1100	2300	3000	3000	4600

Remark

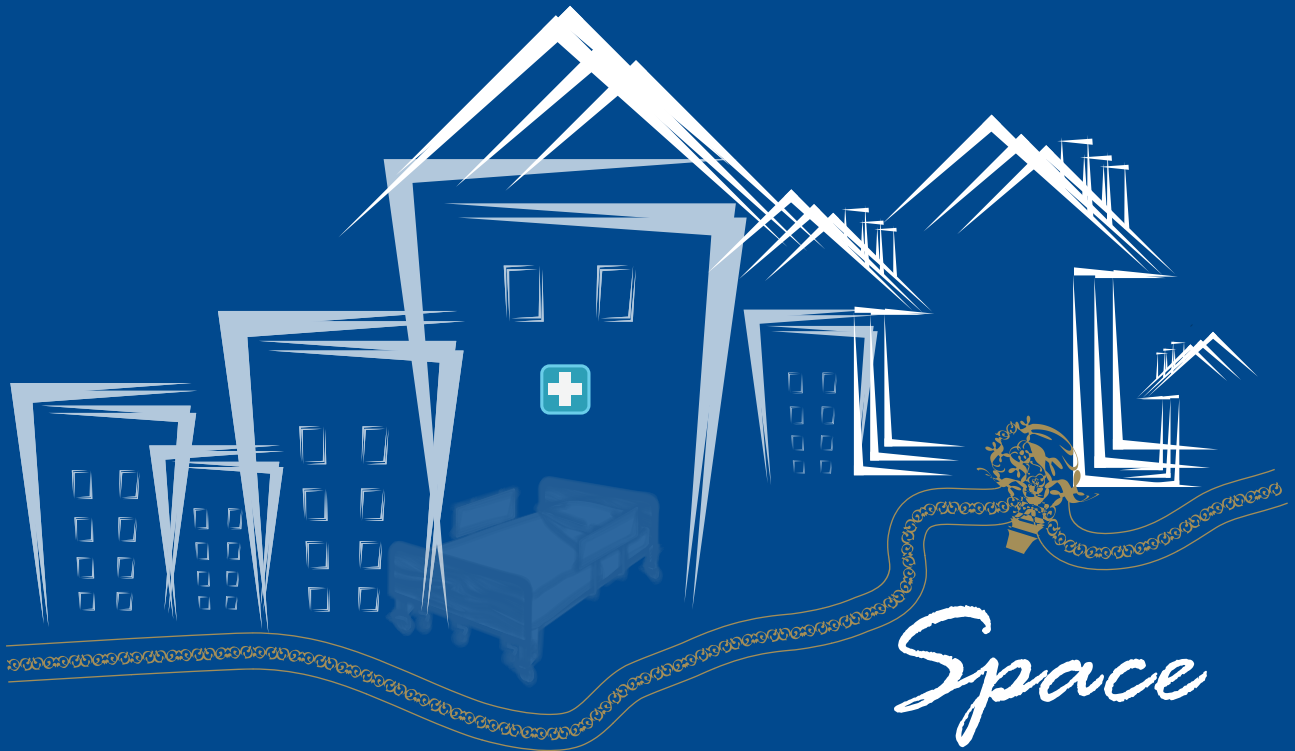
- The height of car size is 2300mm
The height of entrance is 2100mm
- Was built above the tenth floor, the hoist way under this table should increase the size of 50 mm or more
- Pit beneath the space when in use, should increase the size of the hoist way, please ask our sales staff
- Net size after the completion of the renovation dimensions are shown in this table
- If not listed in this table of type, please ask our sales staff

Rated speed with PIT, OH, & machine room high relational table

Item	Speed			
	45 m/min	60 m/min	90 m/min	105 m/min
PIT	1550 mm	1550 mm	1850 mm	2150 mm
OH	4250 mm	4550 mm	4650 mm	4850 mm
MR	2000 mm	2000 mm	2200 mm	2200 mm

PERFECTION IS OUR GOAL

SAFETY EFFICIENCY COMFORT ENVIRONMENT SPACE



Contact with your life

OPERATION OFFICES

TAIPEI HEAD OFFICE

Tel:02-2537-1355
Fax:02-2567-5205

Address: 2F., No.129, Sec. 2, Minsheng
E. Rd., Zhongshan Dist., Taipei City 104,
Taiwan (R.O.C.)

TAOYUAN FACTORY

TEL: (03) 361-0491
FAX: (03) 362-7316

Address: No.253, Yongfeng Rd., Bade
Dist., Taoyuan City 334, Taiwan (R.O.C.)

TAICHUNG OFFICE

TEL: 04-2321-2301
FAX: 04-2325-6774

Address: 4F.-7, No.55, Guanqian Rd.,
West Dist., Taichung City 403, Taiwan
(R.O.C.)

KAOHSIUNG OFFICE

TEL: (07) 261-1321
FAX: (07) 215-0326

Address: 7F.-9, No.103, Zhongzheng 4th
Rd., Xinxing Dist., Kaohsiung City 800,
Taiwan (R.O.C.)

THAILAND DEALER

TEL: (662) 246-1962~3
FAX: (662) 246-1964

Address: 61/279 Rama 9 Road, Huay
Kwang, Huay Kwang, Bangkok 10310

